

AppsAnywhere

What is AppsAnywhere?

AppsAnywhere is a new service provided by Teesside University to make some of the most popular software applications available in more places. AppsAnywhere is an application virtualisation technology that allows applications to be captured and subsequently streamed to machines with the AppsAnywhere client. The pilot and initial implementation has included applications selected by every school.

Where is AppsAnywhere available

AppsAnywhere is currently available in the following locations:

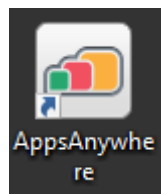
- The Library
- All Open Areas
- M7.04
- General Purpose Teaching rooms (GPT)

How will AppsAnywhere benefit the University

The technology should enhance the student experience by taking applications that were traditionally only available in specific school labs and making them available in the Library and General Purpose Teaching rooms to be part of teaching.

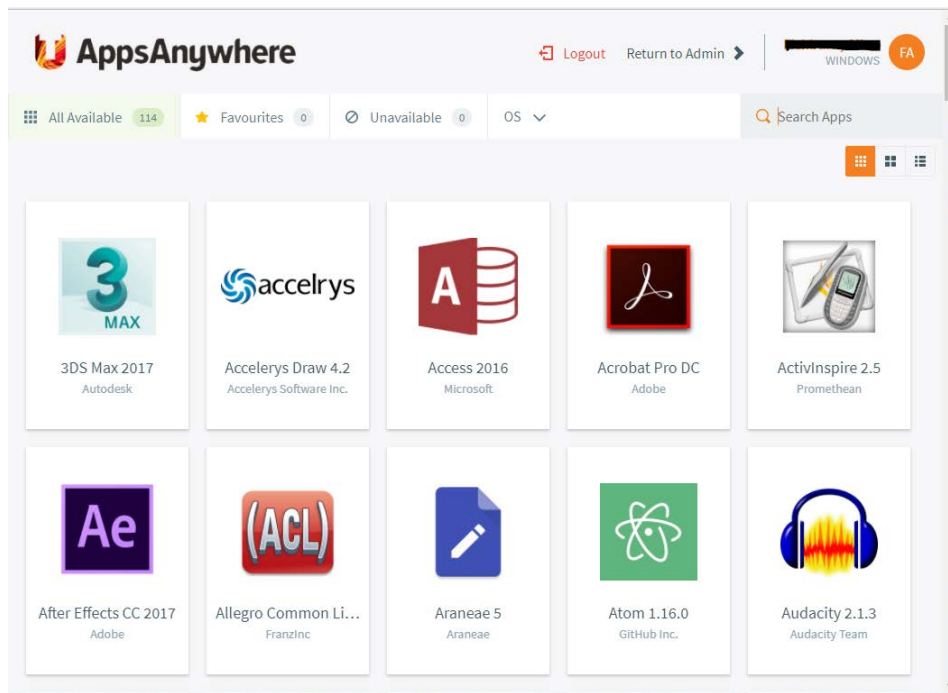
How do I access the AppsAnywhere?

AppsAnywhere can be accessed wherever this icon is available:



How do find applications?

On entering AppsAnywhere a list of available applications is presented, as below:



You can browse all applications by scrolling down the page, or you can find a specific application by using the powerful search function in the top right-hand corner, which filters live results.

How do I launch applications?

Simply click the launch button on the application tile. The launch button will appear when you hover over the tile with your mouse pointer.

Will it take longer than in the labs?

Applications take slightly longer to load the first time they are ran using AppsAnywhere as the files are streamed from a server. However, on subsequent runs there should be very little noticeable difference compared to locally installed software.

Why don't ITaCS just install all these applications everywhere

The more applications installed on a PC the longer the login time on that particular PC. Virtualisation technology is a way we can get around this limitation.

Are all applications available to me?

Some applications are limited to staff/students from a particular school due to license restrictions.

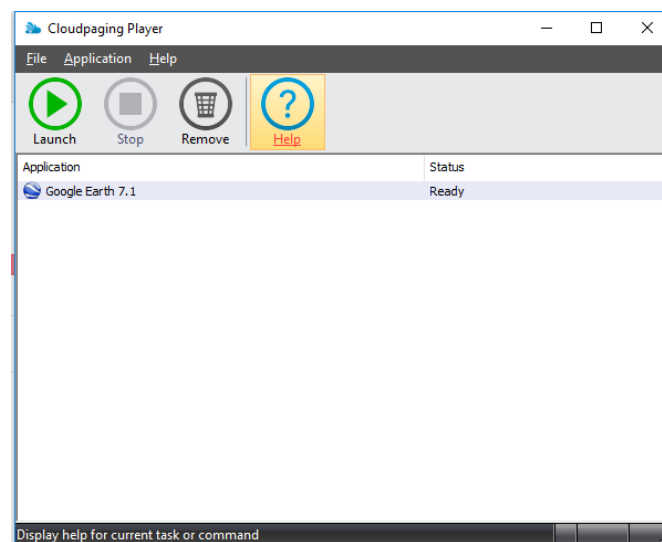
Can I run anything on the list?

All of the applications should run but some of the larger applications require higher specification computers to run efficiently. The machines on the 1st floor of the Library, for example, have been purchased specifically to run all applications, whereas the teaching room PCs may struggle with some and teaching should not be based around these without first testing that the software runs efficiently.

What if I want to run a sub-part of an application, e.g. SolidWorks Electrical that is part of SolidWorks

Run the parent application first and then sub applications will be available from the Start Menu or desktop

What is the Cloudpaging player?



The player takes the applications you select in AppsAnywhere and makes them available on the machine.

How do I get an application I use added to AppsAnywhere?

Email ITHelp@tees.ac.uk including the name of the application, and the school you are a member of.

Please note that we can only make applications available that we are legally entitled to use and will prioritise making them available based on a number of metrics. In a very small number of cases it is impossible to package a particular application.

What applications are available on AppsAnywhere

The number of applications available should increase over time, the best way to see the available applications is using the link below

<https://appsanywhere.tees.ac.uk/>

Please note, only machines with the player can stream applications

What do I do if the application I want doesn't work as it should?

Email ITHelp@tees.ac.uk including the name of the application you are trying to run and a description of the problem.