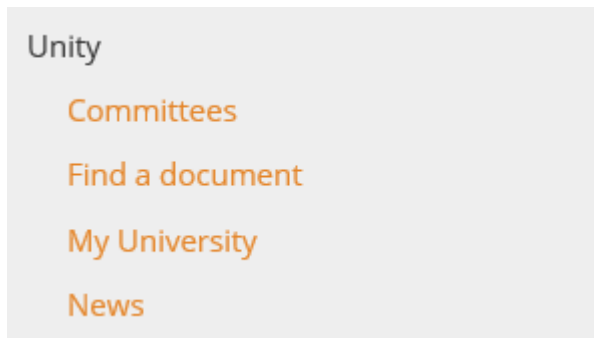


Installing SPSS v25 (Windows)

1. To download SPSS, log into <https://unity.tees.ac.uk> and select **My University** from the side menu.



2. Select Software Downloads



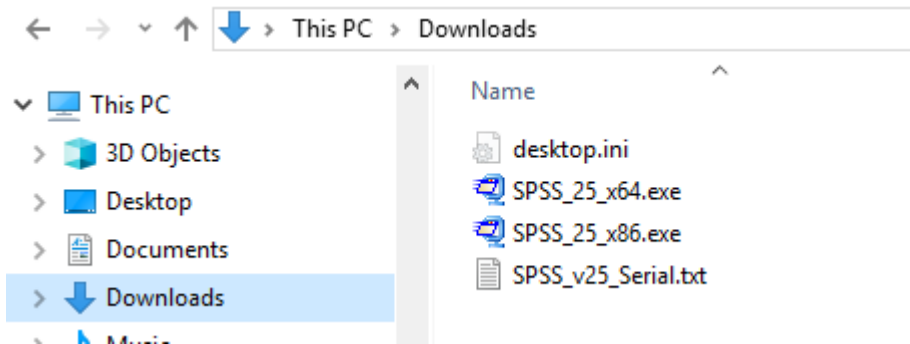
3. From the Software Downloads page, download the appropriate SPSS installation file for your computer (32 Bit or 64 Bit) and the SPSS Serial Code.

Software	Short Description	Restricted To	Guide	Package
SPSS v25 64 Bit	Staff and Student tool for statistically analysing data	Staff, Students	Download	<input type="button" value="Download"/>
SPSS v25 32 Bit	Staff and Student tool for statistically analysing data	Staff, Students	Download	<input type="button" value="Download"/>
SPSS v25 Mac	Staff and Student tool for statistically analysing data	Staff, Students	Download	<input type="button" value="Download"/>
SPSS v25 Serial Code	Serial code required for SPSS v25 installation	Staff, Students	Download	<input type="button" value="Download"/>

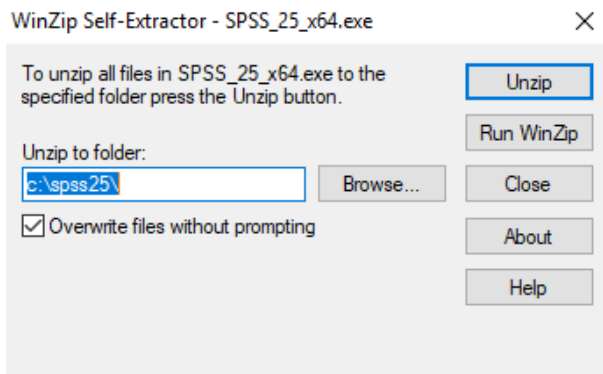
4. To check if you PC will support 32 or 64 bit windows please see the following guides provided by Microsoft.
 - Windows 10
<https://support.microsoft.com/en-gb/help/13443/windows-which-operating-system>
 - Windows 8 and below
<https://support.microsoft.com/en-gb/help/827218/how-to-determine-whether-a-computer-is-running-a-32-bit-version-or-64>

Installing SPSS v25 (Windows)

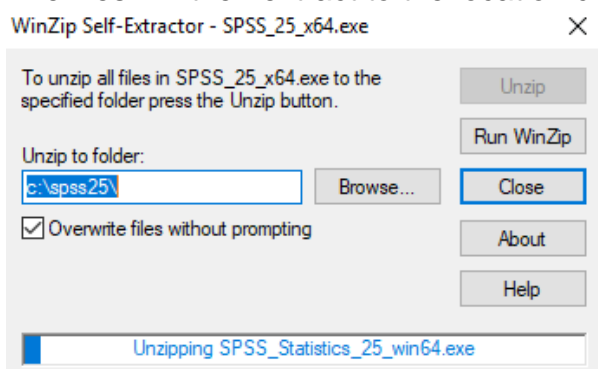
5. Navigate to the location where the files were downloaded, double click the SPSS install file. Choose 64 bit or 32 bit depending on your computer.



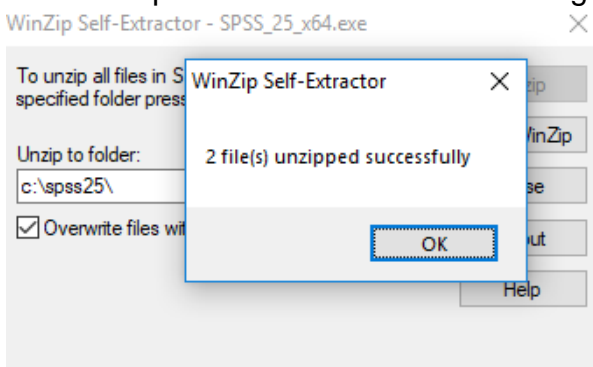
6. The following windows will show, click on Unzip and extract the files to a location on your computer, the example shows the folder as c:\spss25\, but you can click browse and choose your own location.



7. The files will then extract to the location chosen.

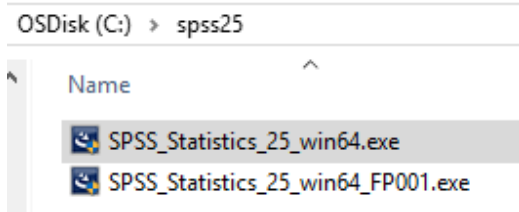


8. Once completed it will show the following screen. Then click close



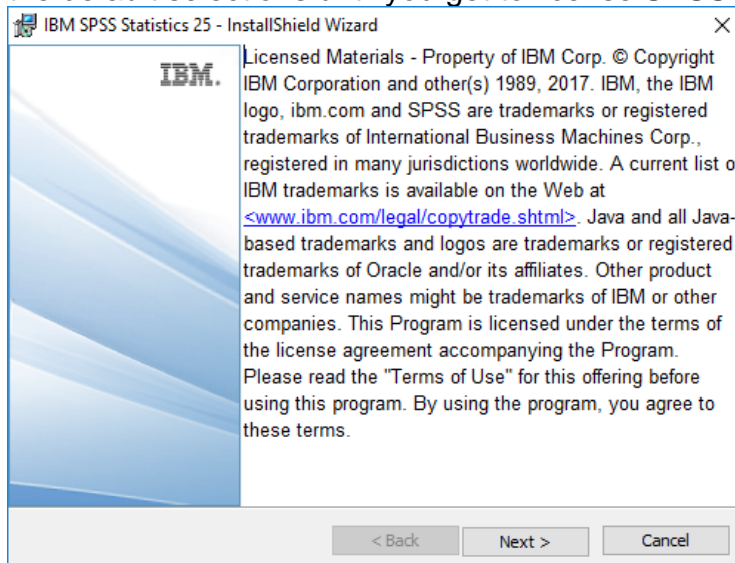
Installing SPSS v25 (Windows)

9. Next navigated to the location the files were extracted too, for this example we will use C:\SPSS25.

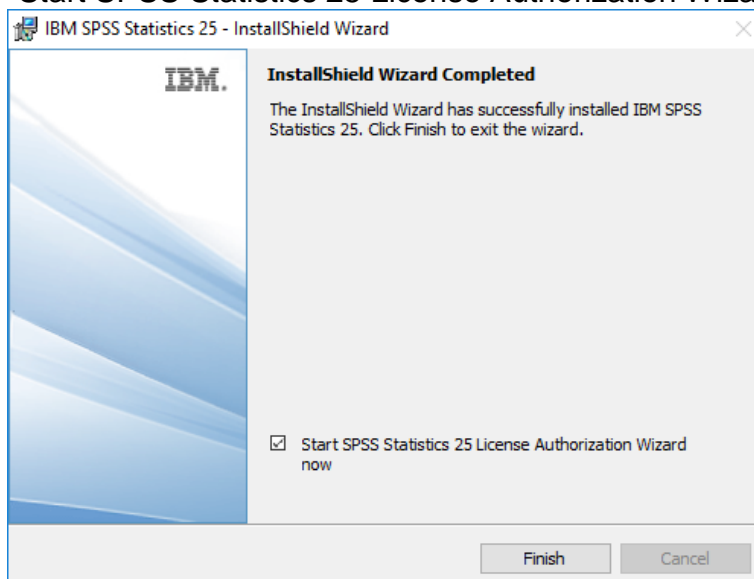


10. Run the file of the version you installed 86 for 32 or 64 for 64 bit such as "SPSS_Statistics_25_win64.exe"
Make sure you are connection to the Internet before running the setup Application.

11. NOTE: Installation can take some time so please be patient.
Continue the installation you will have to accept any licence agreements and leaving the default selections until you get to license SPSS.



12. Once completed you will see the following page. Make sure to check the box marked "Start SPSS Statistics 25 License Authorization Wizard now".

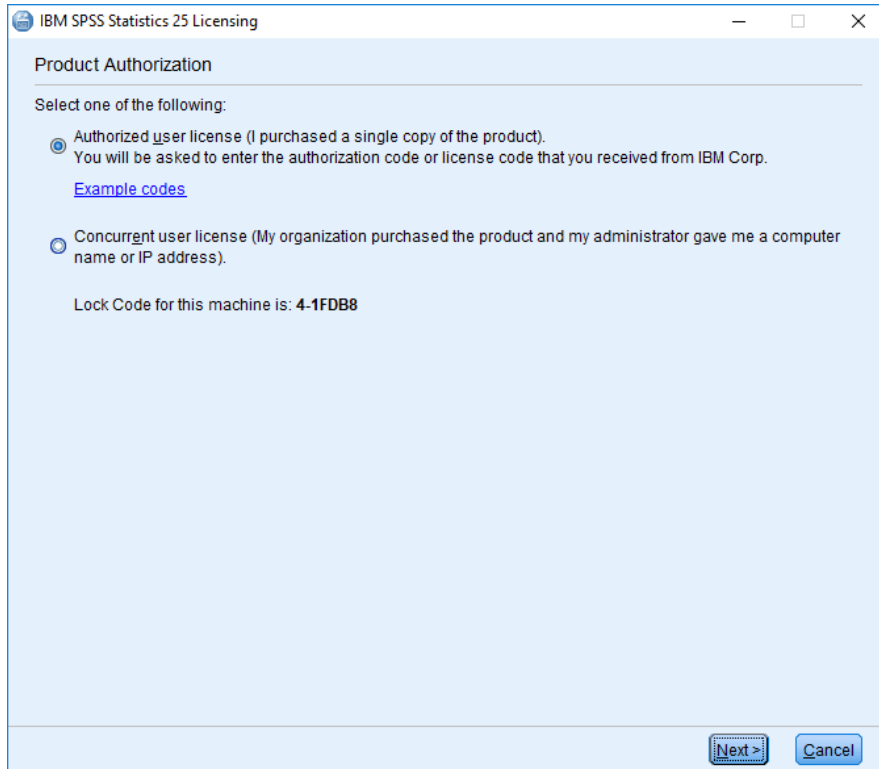


Installing SPSS v25 (Windows)

14. To license the software, this requires an internet connection.

The IBM SPSS Statistics License Authorization Wizard will load up (Choose the 1st option "Authorized user license" checking the 2nd option will cause issues while licensing.)

Click Next



The screenshot shows the 'Product Authorization' window of the IBM SPSS Statistics 25 Licensing wizard. The window title is 'IBM SPSS Statistics 25 Licensing'. The main content area is titled 'Product Authorization' and contains the following text: 'Select one of the following:'. There are two radio button options: the first is 'Authorized user license (I purchased a single copy of the product). You will be asked to enter the authorization code or license code that you received from IBM Corp. [Example codes](#)'; the second is 'Concurrent user license (My organization purchased the product and my administrator gave me a computer name or IP address)'. Below the options, it says 'Lock Code for this machine is: 4-1FDB8'. At the bottom right, there are two buttons: 'Next >' and 'Cancel'.

15. The following page will open click Next.

Enter the licence key or copy and paste the licence key from the SPSS v25 Serial Code file that you downloaded and click on Next

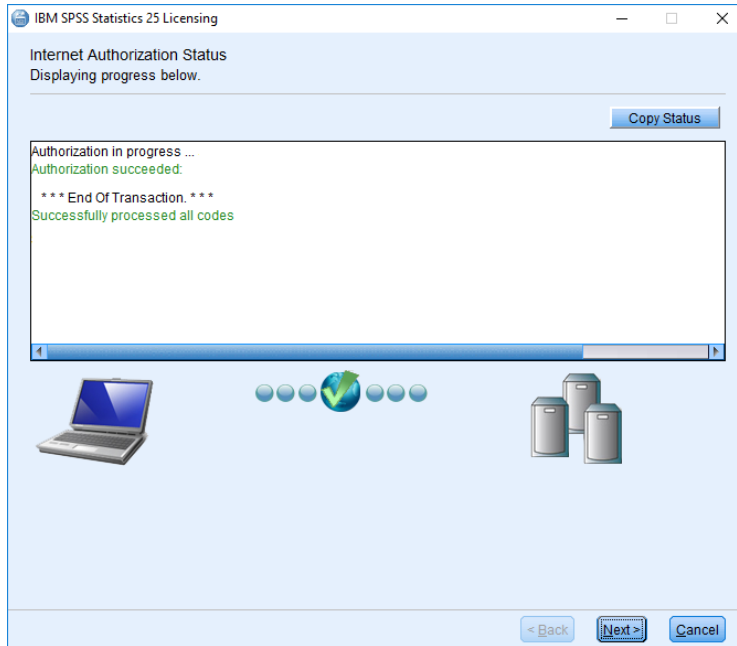


The screenshot shows the 'Enter Codes' window of the IBM SPSS Statistics 25 Licensing wizard. The window title is 'IBM SPSS Statistics 25 Licensing'. The main content area is titled 'Enter Codes' and contains the following text: 'Please enter the authorization code(s) here to license your product. If you have already contacted IBM Corp. via email or phone, please enter the license code(s) sent back to you by IBM Corp. [Example codes](#)'. Below this text, there is a label 'Enter Code:' followed by a text input field. To the right of the input field is a link 'Enter additional codes'. Below the input field, it says 'The authorization code(s) will be sent to IBM Corp. over the Internet. [Connect to the internet through a proxy server](#)'. At the bottom right, there are three buttons: '< Back', 'Next >', and 'Cancel'.

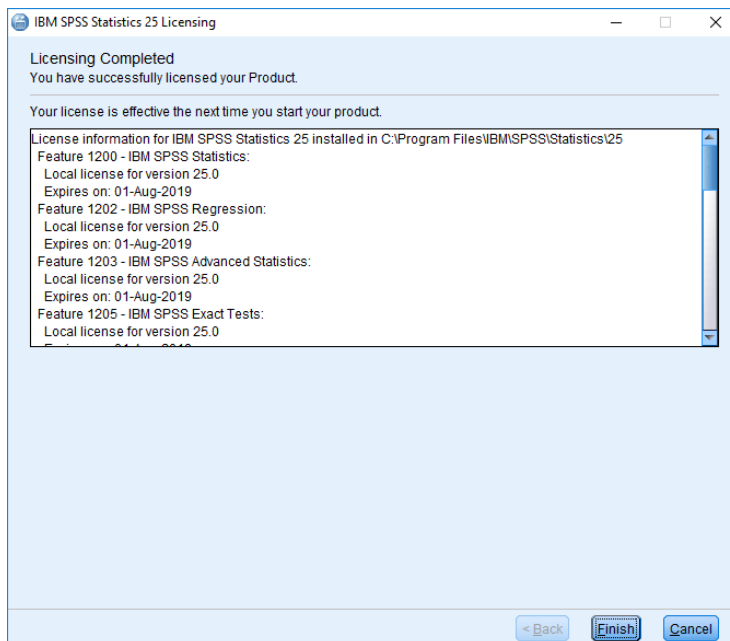
Installing SPSS v25 (Windows)

16. If you are not connected to the internet this part will fail and SPSS will not be licensed

If you see the following screen below, SPSS will be now successfully licensed, click on Next to continue.



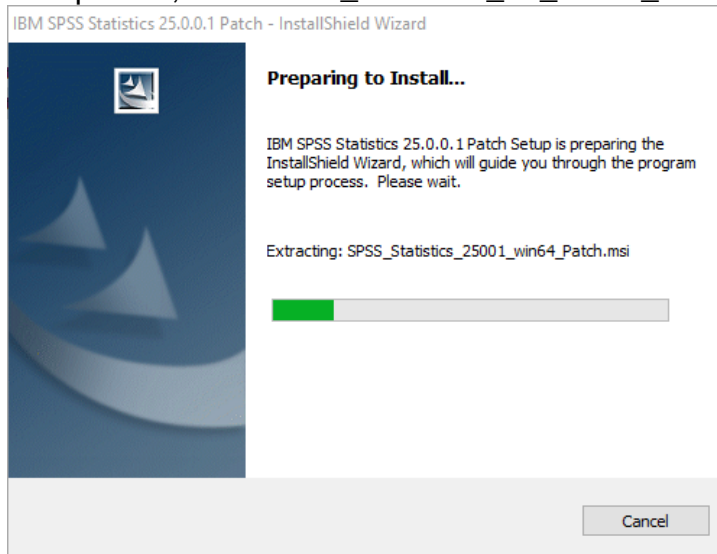
17. Click finish to complete installation, this page will show the version of SPSS and features that are licensed.



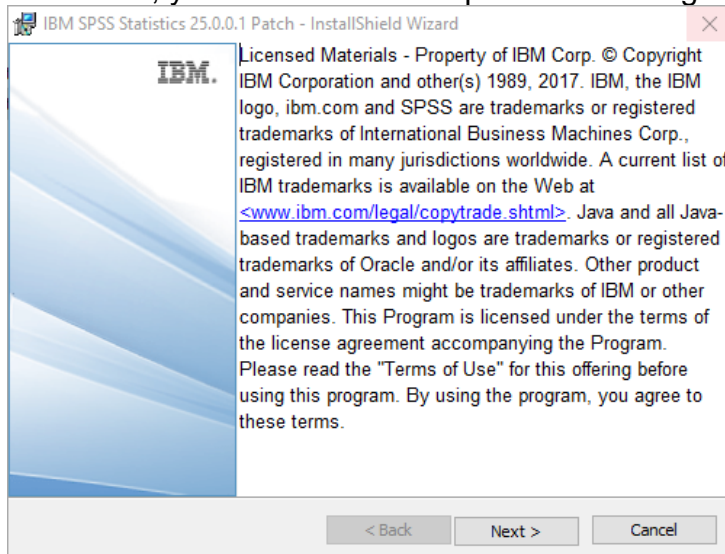
Installing SPSS v25 (Windows)

19. Install SPSS patches

Navigate to the folder the SPSS installers were saved too, for this example we used "C:\spss25", "run SPSS_Statistics_25_win64_FP001.exe"



20. Click Next, you will have to accept the license agreements to continue.



21. The following window will show when the installation has finished, you may have to restart you PC once complete.

