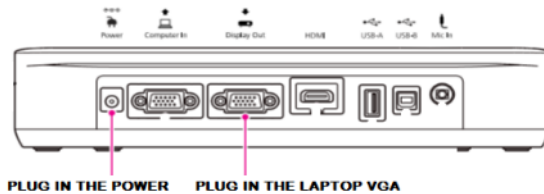


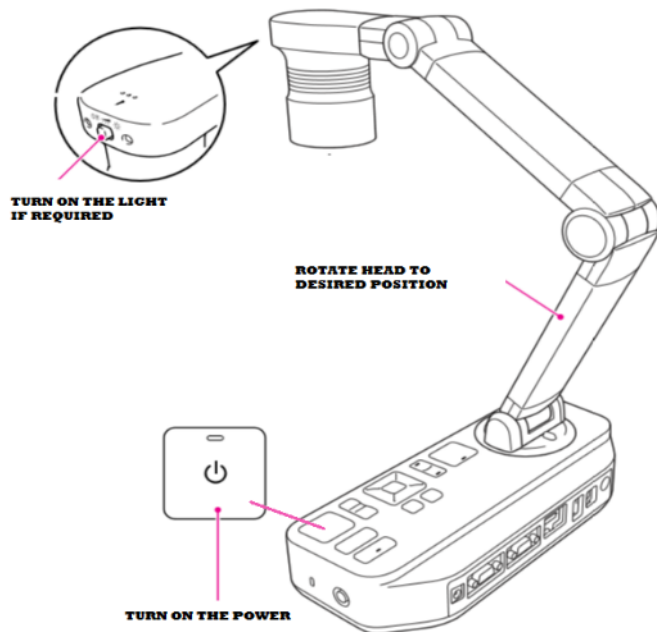
Portable Visualiser Quick Start Guide

Bronze Room

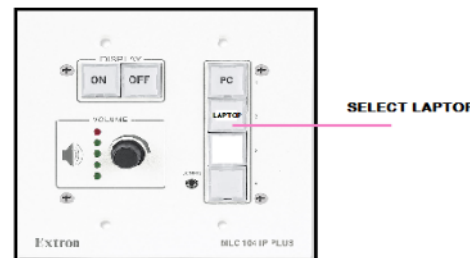
Connections



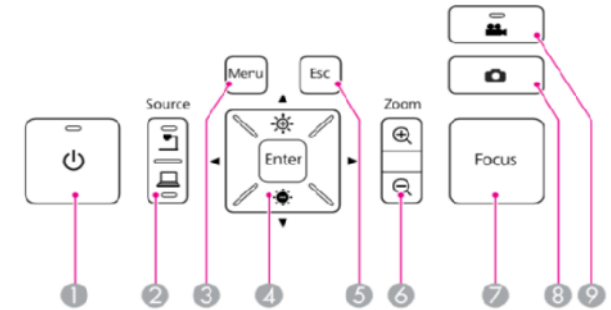
Position the head



Select Laptop



Advanced Operation



Name	Function
1 [Power] button	Turns the document camera power on or off.
2 [Source] button [Camera] [Laptop]	[Camera] Projects images from the document camera. [Laptop] Projects images from a Connected Laptop
3 [Menu] button	Opens and closes the menu.
4 [▲] [▼] [◀] [▶] button [Brightness] [Brightness] button [Enter] button	When the menu screen is displayed, pressing these buttons selects menu items and setting values. Adjusts the image Brightness. When the menu is displayed, pressing this button confirms the current item.
5 [Esc] button	Stops the current function. When the menu is displayed, pressing this button moves to the previous menu level.
6 [Zoom] button [+] [-]	Enlarges or reduces the image without changing the projection size.
7 [Focus] button	Press the [Focus] button to automatically focus the image. The unit cannot focus on objects that are approximately 10 cm (4 inches) or less from the surface of the camera lens.
8 [Camera] button	If you press and release the button, the image is frozen.
9 [People] button	NOT IN USE

Full User Guide
<https://files.support.epson.com/pdf/elpldc20/elpldc20ug.pdf>