

#### Q1 What is it?

It is possible to connect your device to the projectors at the University. This is achieved using the University's Eduroam wireless network. Connecting your device to a projector enables you to project your lecture material and presentations from your mobile devices.

#### Q2 What devices can I use and what can I project?

You can project the following media via the following devices as displayed in the table below.

Device	Media Supported
IPads/IPhones	Word PowerPoint Excel Keynote Adobe PDF JPG TIFF PNG Internet pages
Android Devices	Adobe PDF JPG TIFF PNG Internet pages

#### Q3 How does it work?

It works by connecting over the University wireless network by utilising applications. When using an android or apple tablet or device the mobile app '**Epson iProjection**' is used.

#### Q4 Are there any prerequisites I need to know about?

Yes. The device you are using has to be connected to the University's Wi-Fi provision **Eduroam**.

You also need to know the IP Address of the projector. To do this follow the following steps:-

- 1) Turn the projector on by pressing the on button on the control box.
- 2) Select the VCR button as demonstrated on the next page.

Department of IT and Communications Services

**itacs**

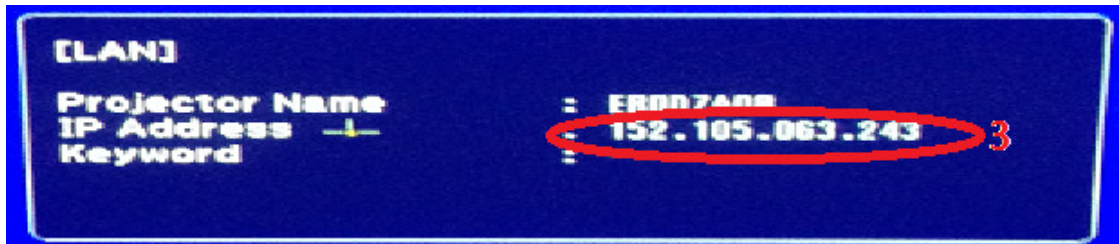
 Teesside University

## IT Services

Connecting to a Projector Using Your Tablet/Phone



- 3) The projector will display the following, take note down the IP address, you will be using this later.



### Q5 How do I use it on my Tablet/Phone?

The app you need to install is Epson iProjection which is available from the Apple App Store or the Android App store. Install the app, run it and follow the following steps to project:-

- 1) To connect to the projector, open the iProjection App, select Projector then other. Enter the IP address of the projector when prompted and select **search**.



- 2) When the projector is located, select the projector and connect. Once this successful, select **Files**, the file type and the file name. In the example over page, the type **Document** is selected followed by the **Getting Started.pdf** file.

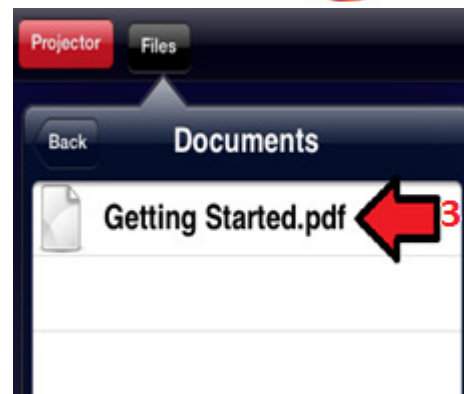
Department of IT and Communications Services

**itacs**

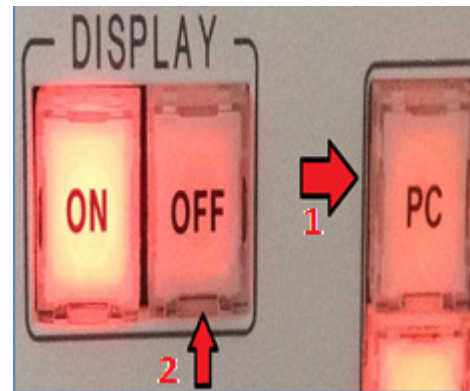
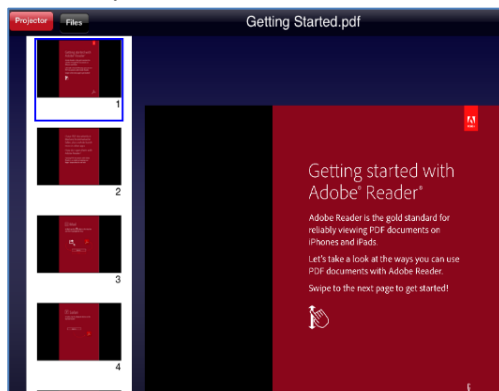


## IT Services

Connecting to a Projector Using Your Tablet/Phone



- 3) The file will now be projected on the screen and can be navigated with the IPProjection app as shown below. Don't forget to switch the control box back to PC and turn the projector off when you are finished.



**Helpful Hint:** The 'Web Page' file type allows you to navigate to a web page and display it on the projector. For example, you can access Blackboard and display your course material and presentations from your mobile device.

Q6 Is there anything else I should know concerning Tablets/Phones and IPProjection?

**Please note that displaying videos with IPProjection is not recommended due to the poor quality results.**

**Helpful Hint:** If you are using an Apple device you can populate the documents list via iTunes by following the instructions in this link over page:-

Department of IT and Communications Services

*itacs*



## IT Services

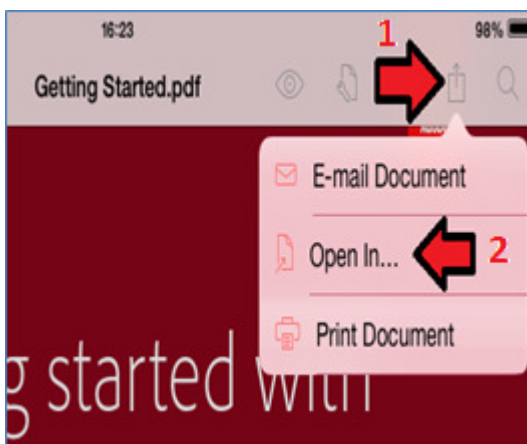
Connecting to a Projector Using Your Tablet/Phone



[http://www.epson.com/cgi-bin/Store/support/supDetail.jsp?BV\\_UseBVCookie=yes&infoType=FAQ&oid=200504&prodoid=63098445&foid=201600](http://www.epson.com/cgi-bin/Store/support/supDetail.jsp?BV_UseBVCookie=yes&infoType=FAQ&oid=200504&prodoid=63098445&foid=201600)

Alternately, you can open the document on your Apple device, select **Open In option** and select **Open in iProjection** and follow the connection instructions as defined in question **Q5**.

**Please note this approach does not work with all Apple apps.** Please see below for details how to use this approach with a pdf file.



**Helpful Hint:** For detailed information and explanation of iProjection functionality for Apple devices, follow this link:-

<http://www.epson.com/cgi-bin/Store/support/supAdvice.jsp?type=highlights&noteoid=215443>

**Helpful Hint:** For detailed information and explanation of iProjection functionality for Android devices, follow this link:-

[http://www.epson.com/cgi-bin/Store/support/supAdvice.jsp?BV\\_UseBVCookie=yes&noteoid=201503&type=highlights](http://www.epson.com/cgi-bin/Store/support/supAdvice.jsp?BV_UseBVCookie=yes&noteoid=201503&type=highlights)

Department of IT and Communications Services

**itacs**

