

Q1 What is it?

You can connect your laptop to the projectors at the University. This is achieved using the University's Eduroam wireless network. Connecting your device to a projector enables you to project your lecture material and presentations from your laptop.

Q2 What devices can I use and what can I project?

You can project from the following devices displayed in the table below.

Device	Media Supported
Apple laptops	Supports screen cloning or duplication of the laptop screen.
Windows laptops	Supports screen cloning or duplication of the laptop screen.

Q3 How does it work?

It works by connecting over the University wireless network via applications. When using a MAC or Microsoft Windows laptop the application used is '**EasyMp Network Projection**'.

Q4 Are there any prerequisites I need to know about?

Yes. The device you are using has to be connected to the University's Wi-Fi provision **Eduroam**.

The operating system (OS) has to be Windows XP or above. If you are using an Apple laptop the OS has to be Mac OS X 10.3.x or above. **Epson recommends** OS X 10.3.9, 10.4.11 or 10.5.5 for the best results. You also need to know the IP Address of the projector. To do this follow these steps:-

- 1) Turn the projector on by pressing the on button on the control box.

Department of IT and Communications Services

itacs



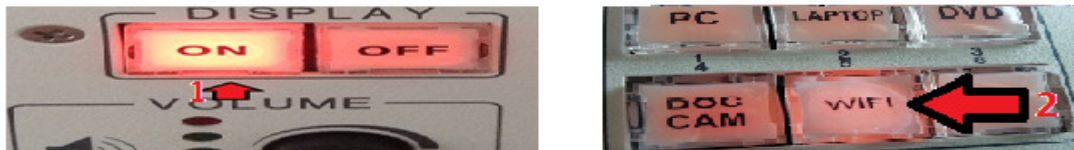
Teesside
University

IT Services

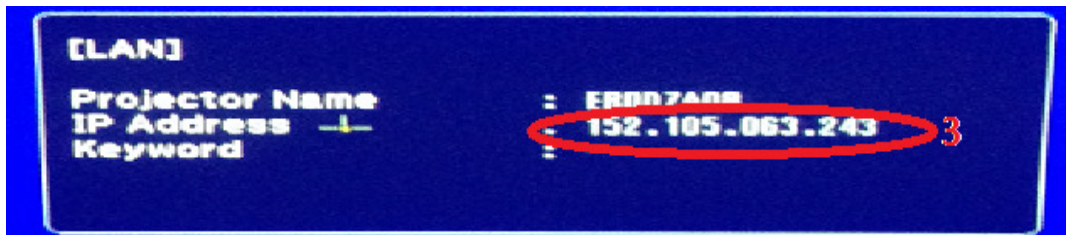
Connecting to a Projector Using Your Laptop



- 2) Select the WIFI button as demonstrated below.



- 3) The projector will display the following, take note down the IP address, you will be using this later.



Q5 How do I use it on my Laptop?

The application you need to install is Epson EasyMp Network Projection and is available via the following link if it is not already installed:-

https://www.epson.com/cgi-bin/Store/support/supDetail.jsp?oid=35942&infoType=Downloads&platform=OSF_MX5

Select your operating system used for your laptop, select EasyMP Network Projection and download as shown below. When the download is complete, install it:-



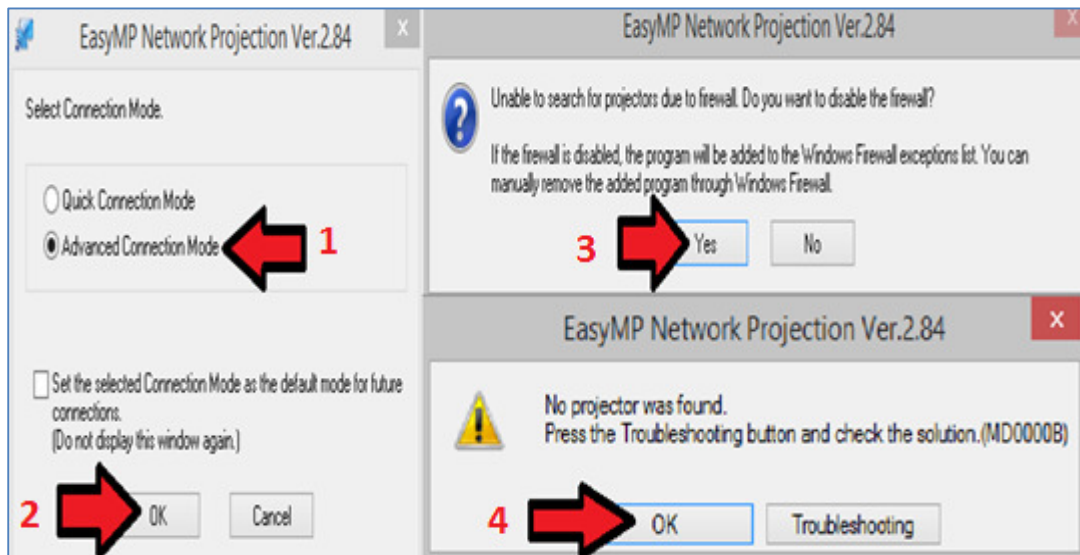
- 1) To connect to the projector start the Epson EasyMp Network Projection. When prompted, select the **advanced option**. If prompted to disable your firewall select yes. **Note this does not**

Department of IT and Communications Services

itacs

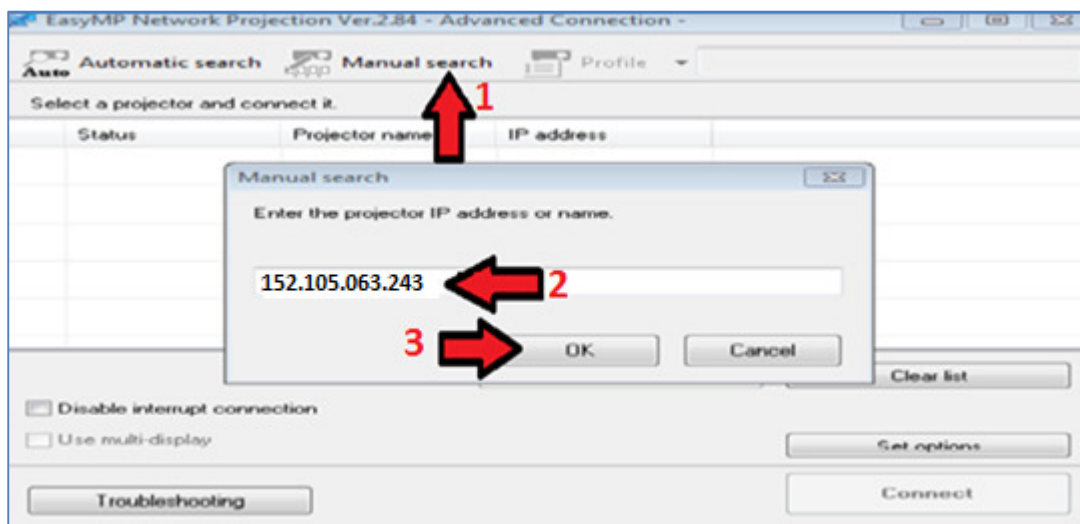


turn off your firewall, it just adds a rule to allow the use of EasyMP. EasyMP will fail to find a projector so select **OK** to continue. Please see the picture below for guidance.



Helpful Hint: If you are having problems installing or downloading the application, please contact the IT Service Desk on the contact details at the bottom of this page.

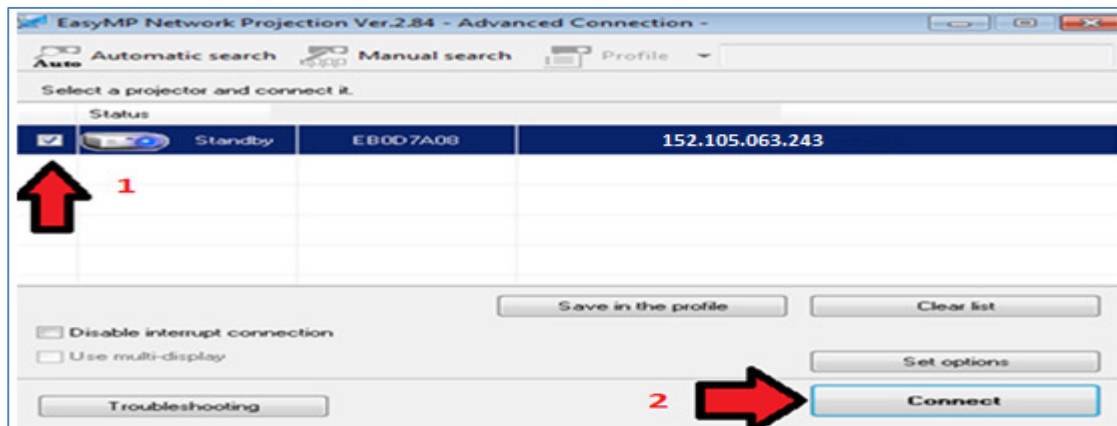
- 2) To connect to the projector select **Manual Search**, enter the IP address details from **Q4** and select OK as detailed below:-



- 3) When the laptop has found the projector, select it and select **connect** as shown over page:-

IT Services

Connecting to a Projector Using Your Laptop



- 1) Your laptop will be projected on the screen app. Don't forget to disconnect when you have complete the presentation via the laptop tool bar, switch the control box back to PC and turn the projector off when you are finished as displayed below.



Q6 Is there anything else I should know concerning Tablets/Phones and IProjection?

Please note that displaying videos with EasyMP is not recommended due to the poor quality results.

Helpful Hint: For full instructions and a full explanation of the functionality of the laptop toolbar please visit the following link:

<https://files.support.epson.com/pdf/easympr/easymprugm.pdf>

Please note that not all the options on the laptop toolbar work with all the projectors.

Department of IT and Communications Services

itacs

