

How to Add a Network Printer

We have a number of networked printers on Campus. If you have the appropriate access privileges you can connect to one of these resources.

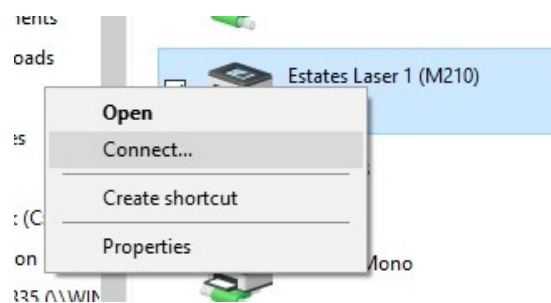
Connecting

- 1) Copy either of the following links and paste into the top field on File Explorer and press “return”

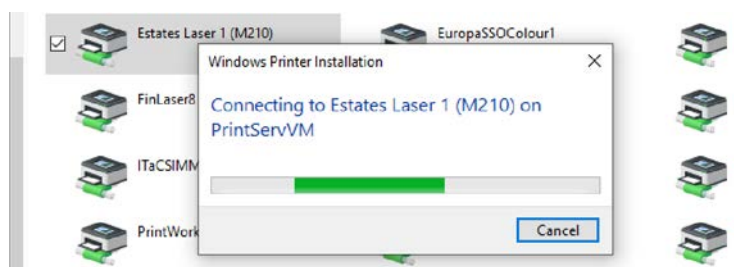


- Non MyPrint link is **\\PrintServVM**
- MyPrint link is **\\myprintq**

- 2) Locate the printer that you wish to add
- 3) Right click on the printer
- 4) Select “Connect”



- 5) The queue will install



- 6) Once the window closes the printer will be available to use.