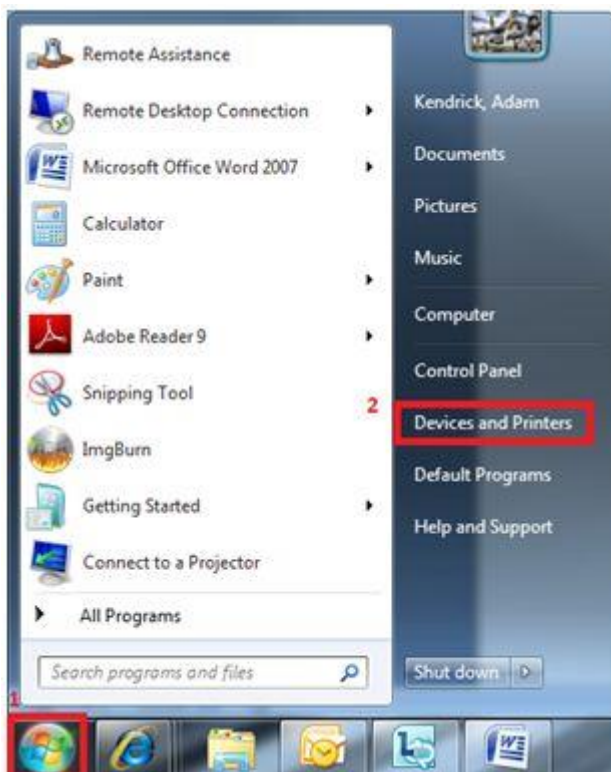


How do I install a networked printer?

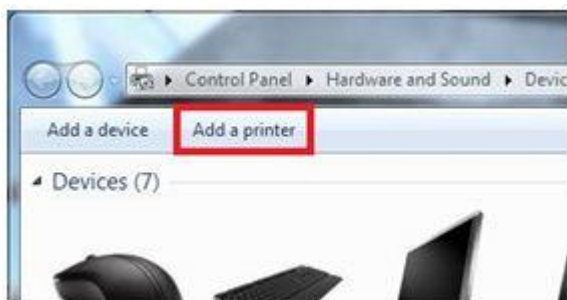
Using the following process users within their relevant departments can install their own networked printer. However, please note:

You will not have permission to install a networked printer that belongs to another department.

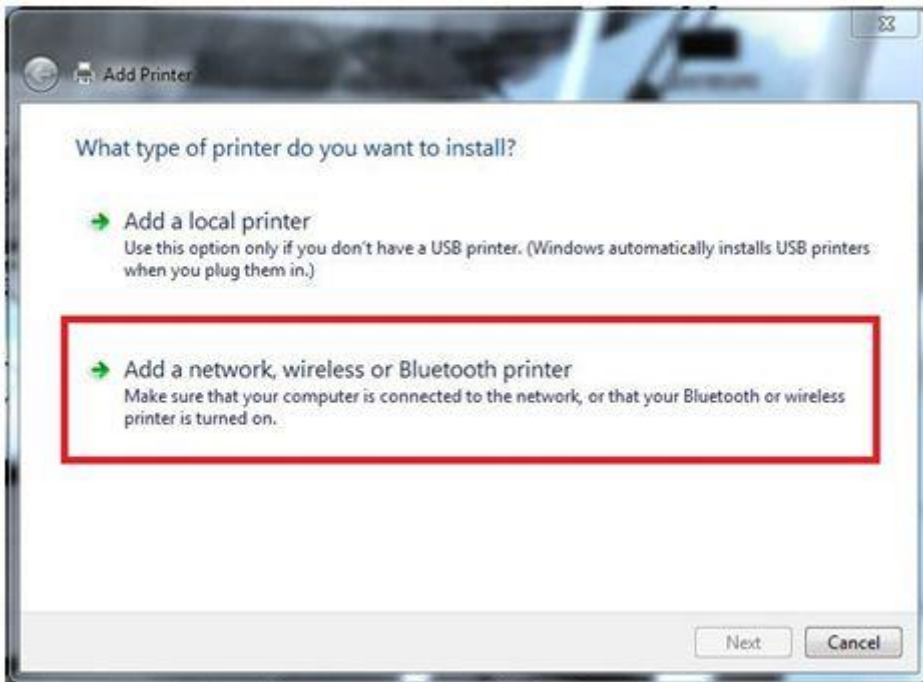
1. Click Start
2. Select 'Devices and Printers'



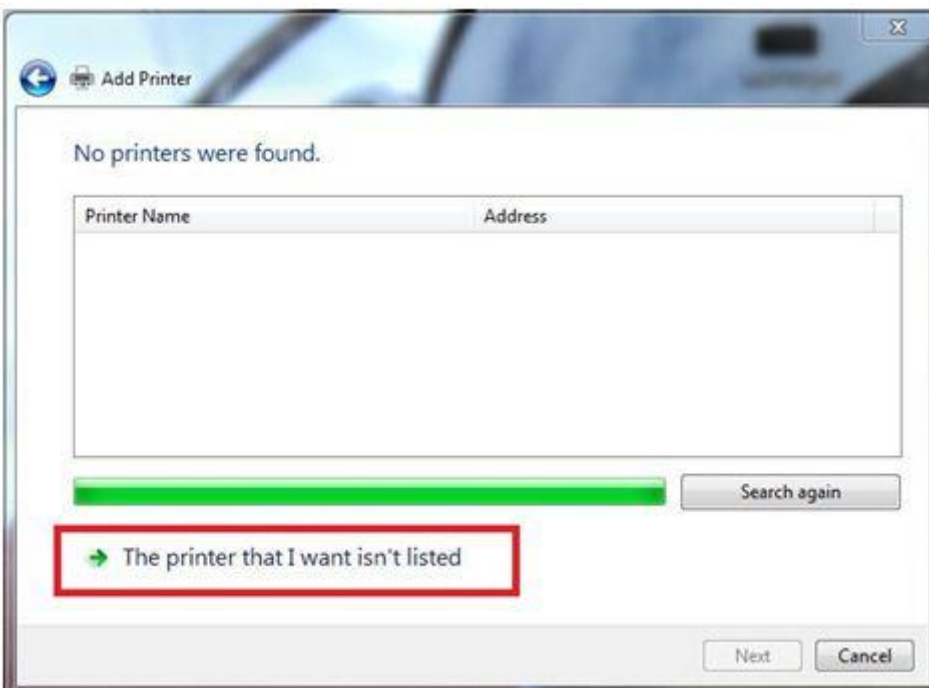
3. Click 'Add Printer':



4. Select 'Add a network, wireless or Bluetooth printer':



5. The search will return no results, now select the 'The printer that I want isn't listed' button:



6. On the subsequent window select the 'select a shared printer by name' field, and type [\\ictprintvm\](#). This should produce a drop-down menu of all network printers in department order.