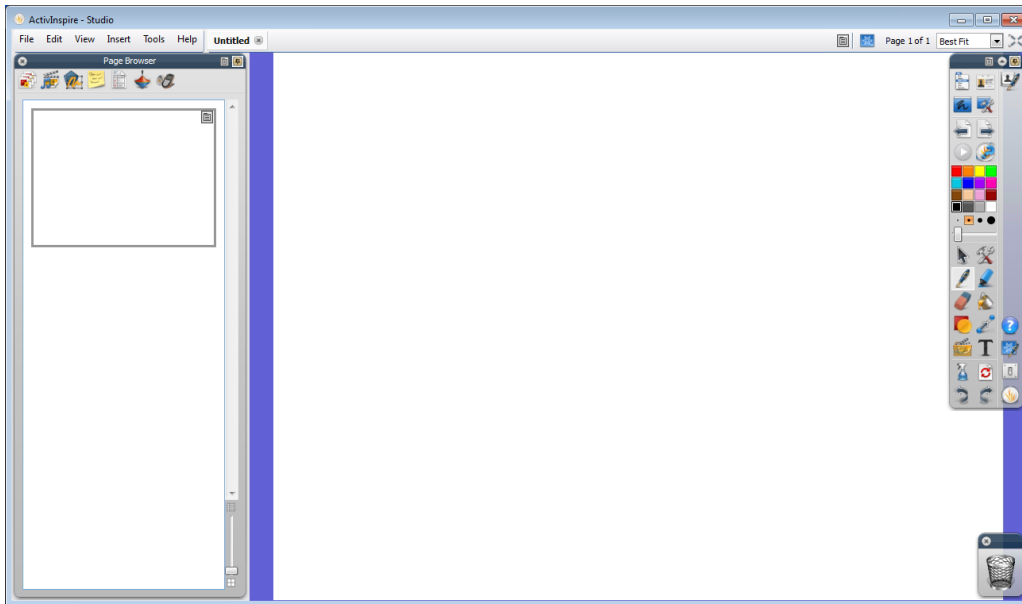


September 2014

How do I Use ActivInspire with the Inter-Active Panel?

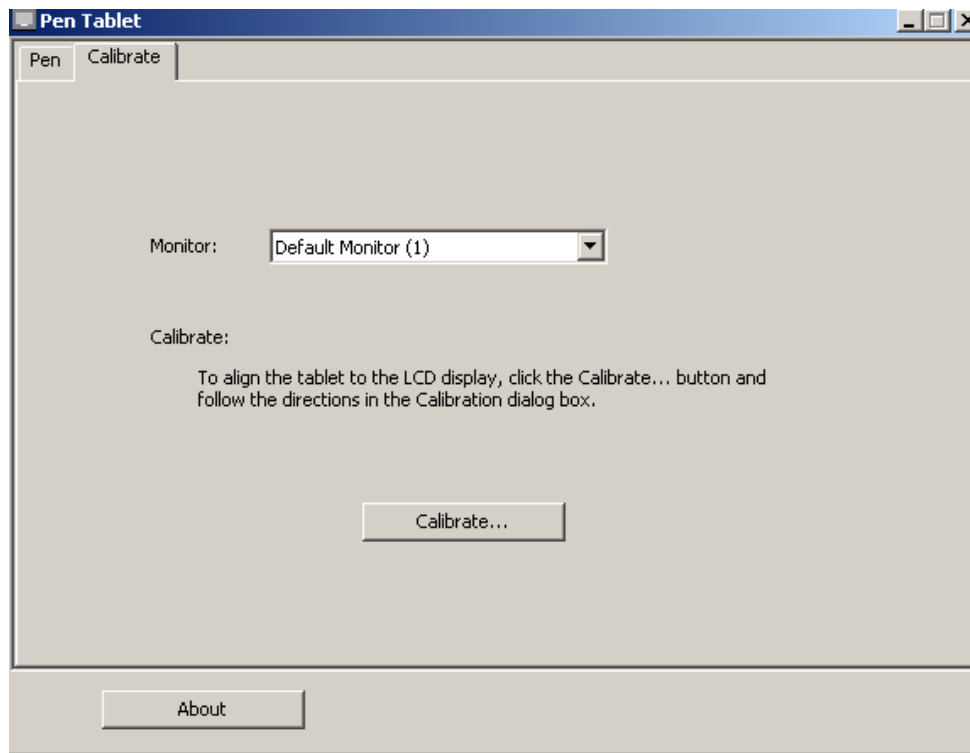
Click ActivInspire from the Desktop.



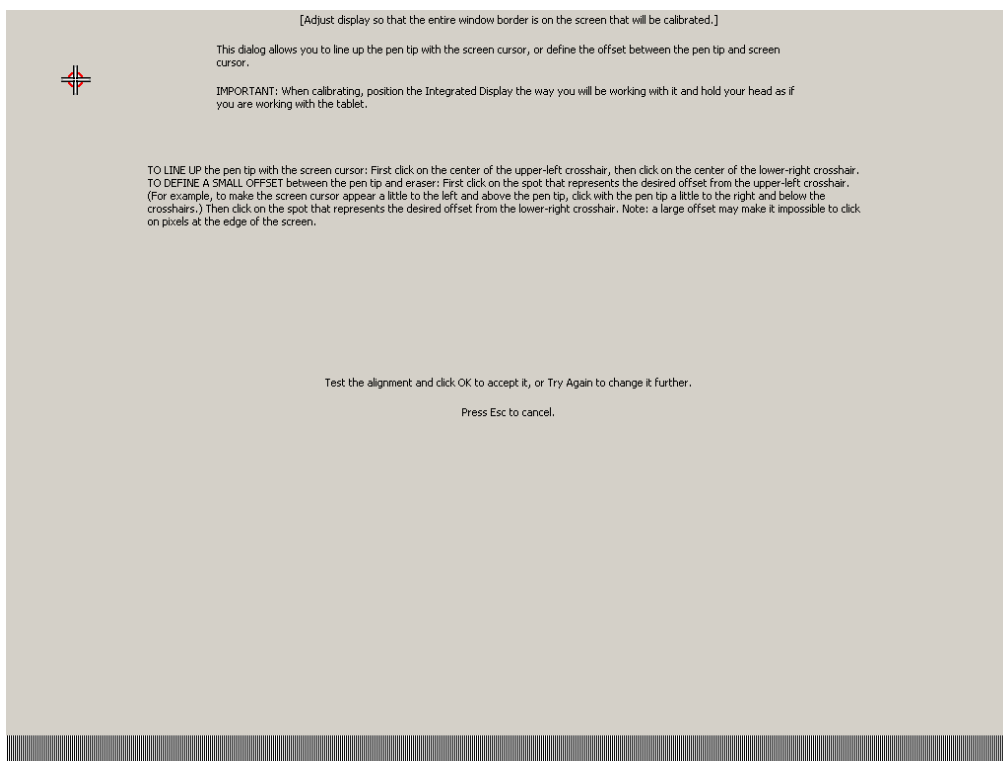
You are now ready to use ActivInspire for all your learning & teaching needs.

In the unlikely event that the Inter-Active Panel needs to be Calibrated, then follow these simple steps.

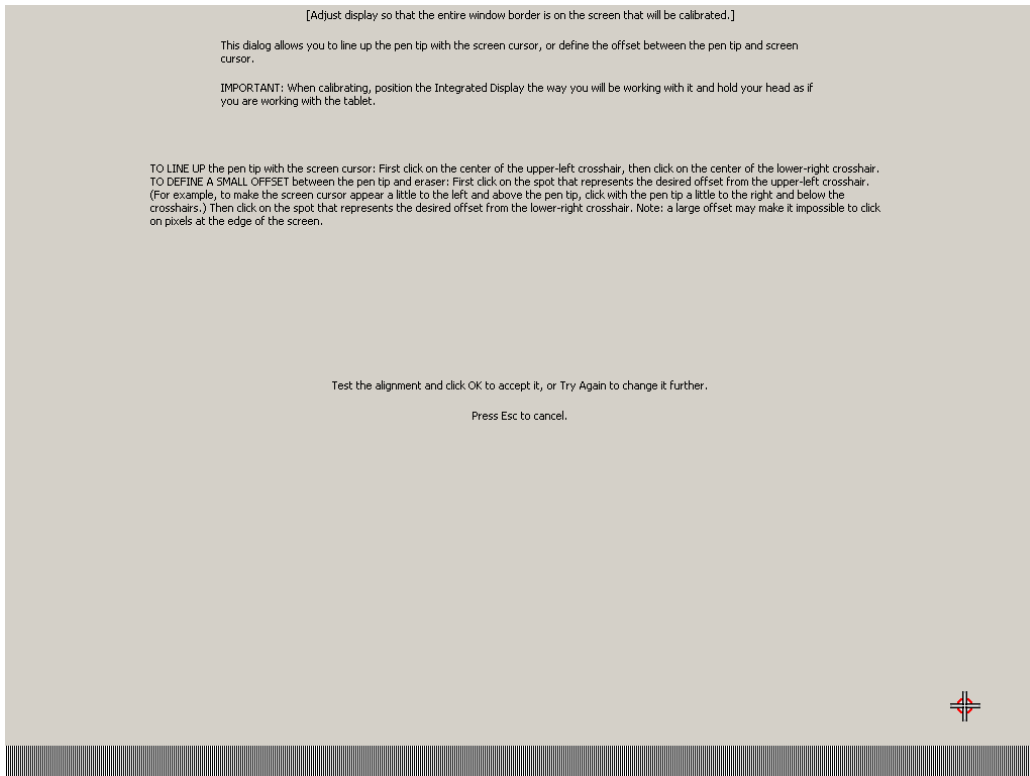
1. Click on **Start / Programs / Tablet / Pen Tablet**.



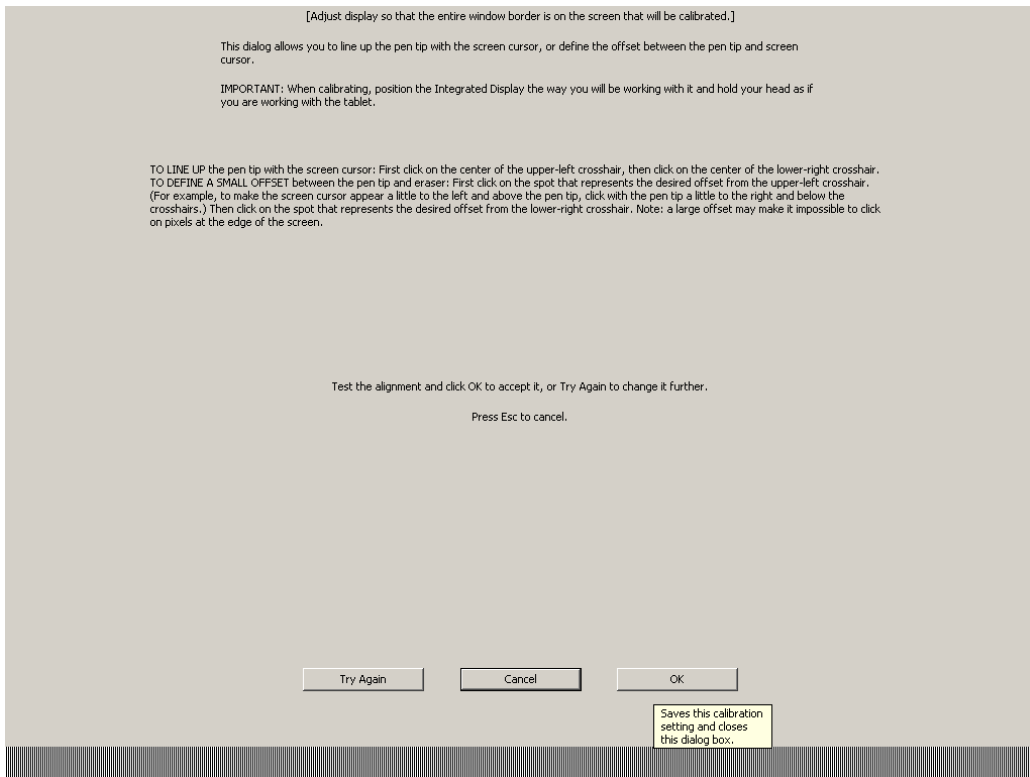
If it does not automatically come up with this then just click on the Calibrate Tab. Once you see this screen then click on Calibrate and the next screen will be seen.



With the Pen attached to the Panel just touch the screen in the middle of the cross in the top Left hand corner for the next screen to show



Repeat as above by clicking on the cross in the bottom right hand corner of the screen and then the following screen will appear.



Click OK and that is the Panel now Calibrated for you to use.

Please remember to follow the above steps and **DO NOT USE** Configure in the ActivInspire program to Calibrate the Inter-Active Panel, as this is for use with an interactive board!